

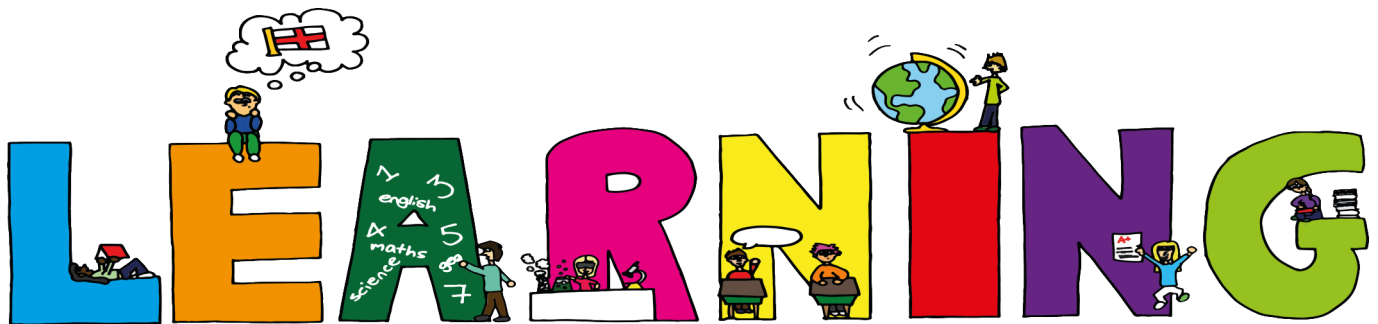
Term 3 Week 8 2019

St Joseph's Primary

Celebration



OF



94 Joseph Street, Kingswood, 2747

Tel 4726 4200

www.stjosephskingswood.parra.catholic.edu.au

Email stjosephskwood@parra.catholic.edu.au

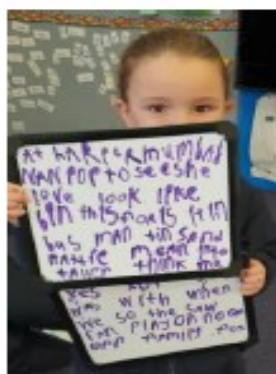
Kindergarten

BANG!

We are **LEARNERS**

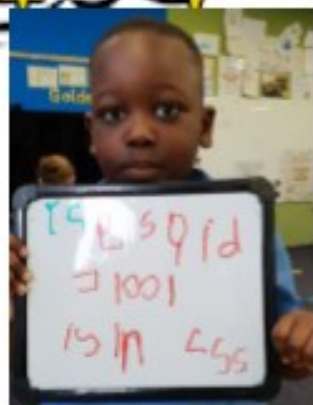
We are **AWESOME**

We are **HEROES**



POW!

BANG!



POW!

Year 1 Celebration of Learning



Fun at Featherdale!



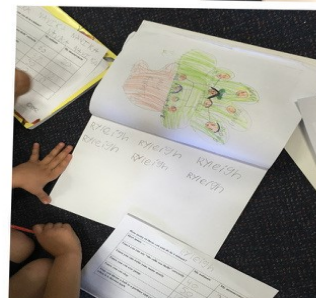
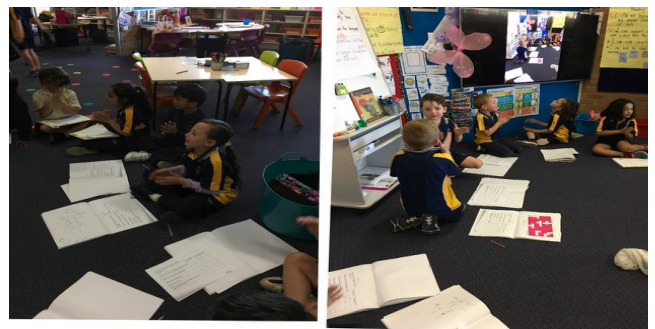
Estimating and Measuring Time

One Minute is the same as 60 seconds

We estimated and recorded some things we could do in one minute?

How many claps can you do in one minute?

How many times can you write your name neatly in one minute?



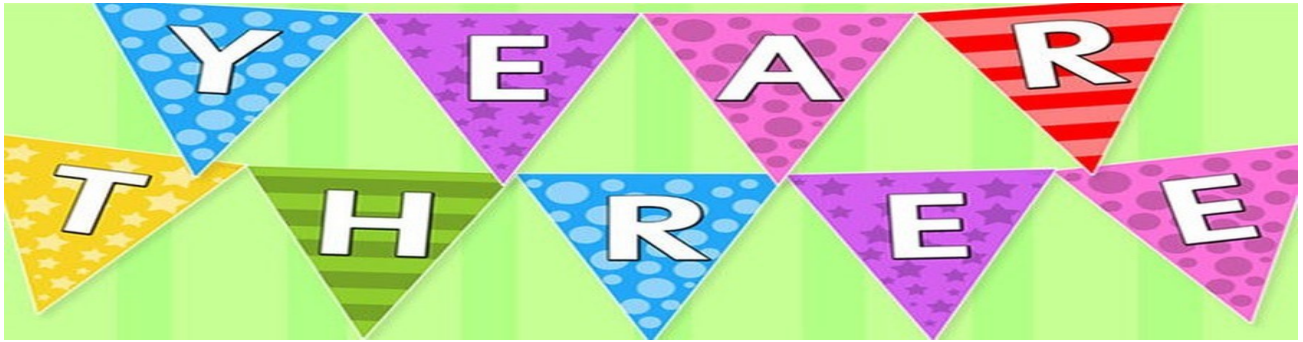
Year 2

Masterchef Mixtures

As part of Inquiry Learning, Year 2 have been working together to create a recipe for icing that could stick to a biscuit. We definitely have some future chefs and scientists among us!

Some helpful Year One students were the judges....





Year 3 - Up, Up and Away



On arrival we watched a 3D movie to give us an idea just how small we are in the Universe.

To support Year 3's inquiry learning in the classroom we attended the observatory at Western Sydney University - Penrith campus. We learnt lots about how force impacts and reacts to objects.



We then headed up to the telescope and learnt how it gets positioned depending on the subject to be viewed.

Then finally the most exciting part of the day we actually got to make our own rockets and launch them! Best day ever!!



**YEAR
FOUR**



| Natural Changes | Man-Made Changes |
|--------------------|--------------------------------|
| Weather | - bushfire |
| Natural Disasters. | - pollution |
| - tornado | - climate change |
| - tsunami | - <u>logging/deforestation</u> |
| - earthquake | - development |
| - cyclone | - backburning |
| - hurricane | - nuclear power / radiation. |
| - drought. | |
| - floods. | |
| - typhoon | |



People's homes are lost/land

We would lose everything.

80% of animals in world

Machines causing pollution.

Causing Global Warming

Greenhouse gases Methane/Carbon released into air

Plants cut down

clears to develop

Species become extinct.

People: Forests are like the earth's lungs. ↓ oxygen.

animals/people trees all depend on each other !!

Deforestation

Who does it effect?

Animals homes destroyed/ need to find another place.

Tree roots die so it can't grow again. Soil becomes loose.

The carbon dioxide that trees hold travel into the atmosphere.


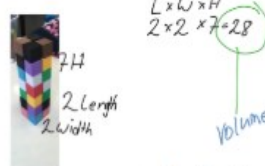
Cutting down trees to make way for agriculture

Mathematics- Volume & Capacity

During mathematics we are learning about measuring an object's volume and capacity.

Mathematics- Volume & Capacity

During mathematics we are learning about measuring an object's volume and capacity.



7H
2 Length
2 Width

$L \times W \times H$
 $2 \times 2 \times 7 = 28$

Volume



Year 5!

Over the past five weeks, Year Five has been very fortunate to have visiting student-teacher, "Miss Vee", from the Western Sydney University. The students have loved having her with us, sharing their learning as she learns from them. Year 5 have welcomed her in our learning space and have also benefitted from her contributions to their learning.



Religious Education is an integral part of being a Catholic School and as we develop a new Religious Education curriculum following the inquiry learning process throughout the diocese. Mrs Kemp, our Religious Education Co-ordinator has been very involved in Year Five these past terms. Mrs Kemp has worked with the students in the class to deepen and extend their knowledge and in planning liturgical celebrations such as the grade Mass this week.

Year Five has also had the pleasure of having Mrs Tanti and Mrs Jarrett in our room . The students have said how much they appreciate and enjoy having all the teachers working in our room to support them in their learning.



Discussing "The Beatitudes"
with Mrs Kemp and Mrs Tanti



Year Five exploring "Space" with Mrs Jarrett

YEAR 6

VOLCANOES

In Science we have been exploring how natural events cause rapid change to Earth's surface. In particular we have been researching and examine the cause and effects of Volcanoes.

